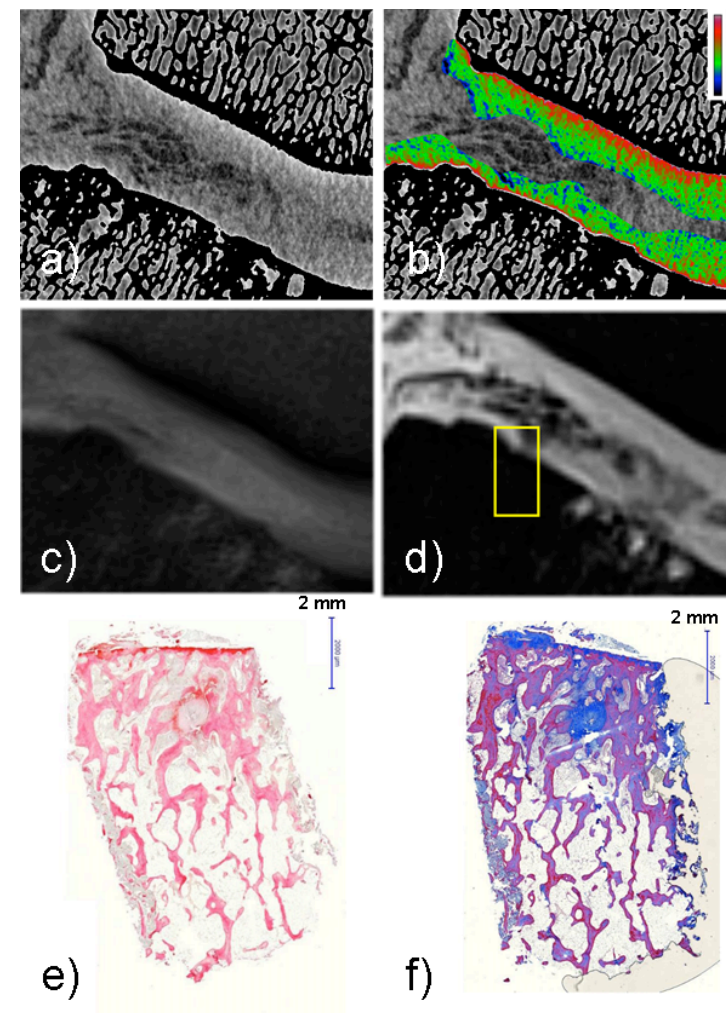
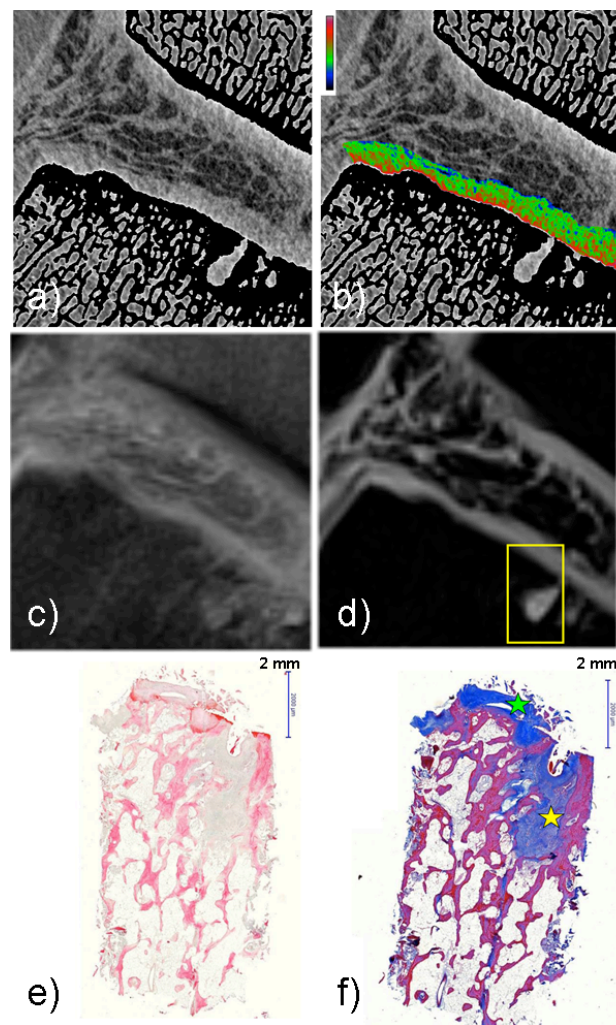
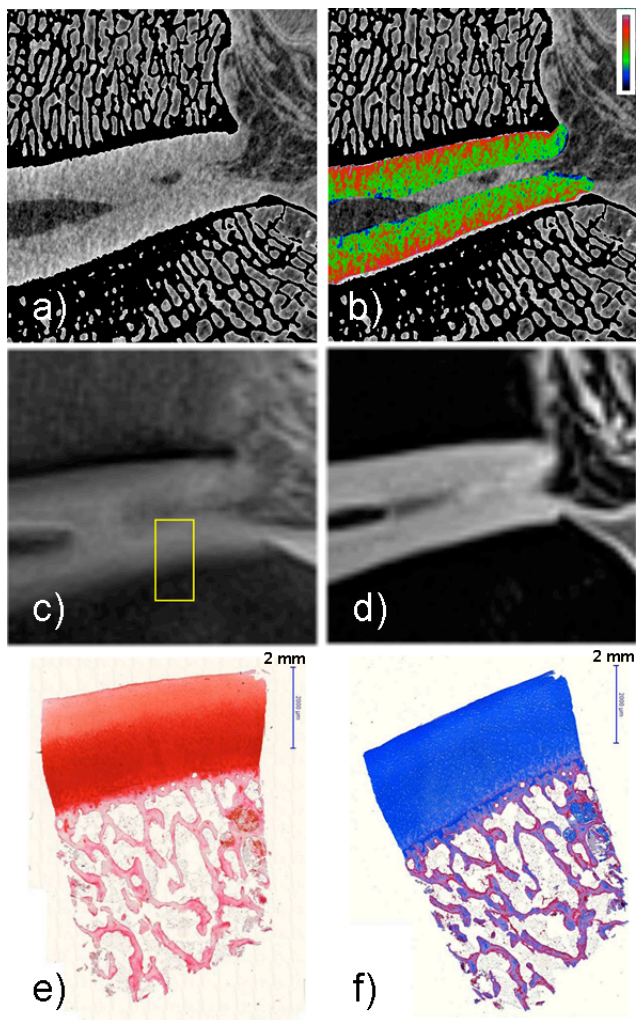


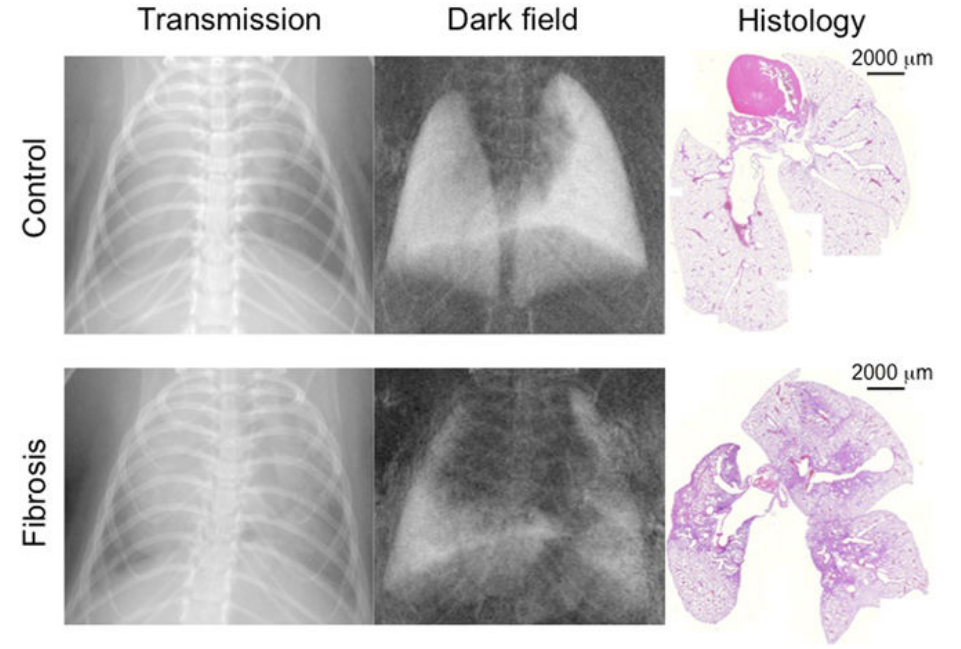
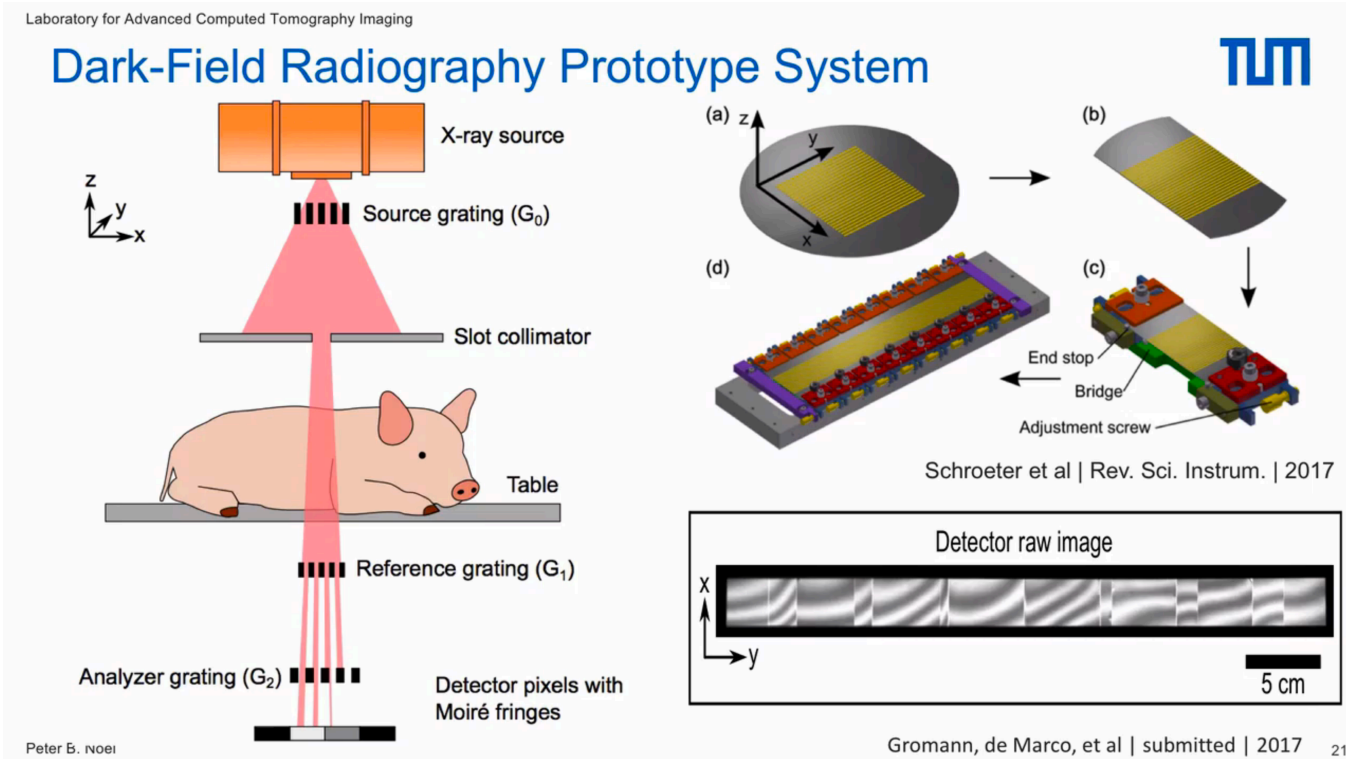
# Seeing inside the cartilage matrix?



# Conclusions

- Thanks to synchrotron radiation quantitativity is possible in medical imaging
  - Helps to understand illnesses
- Phase Contrast Imaging increases the contrast for soft tissue and has many advantages compared to conventional CT
- PCI could help saving dose to patient
- We need to go outside synchrotrons...

# Perspectives

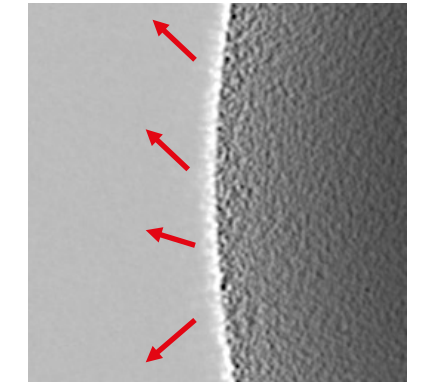
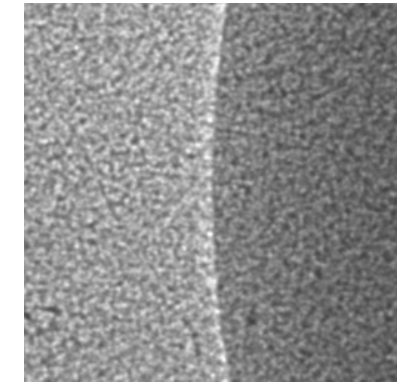
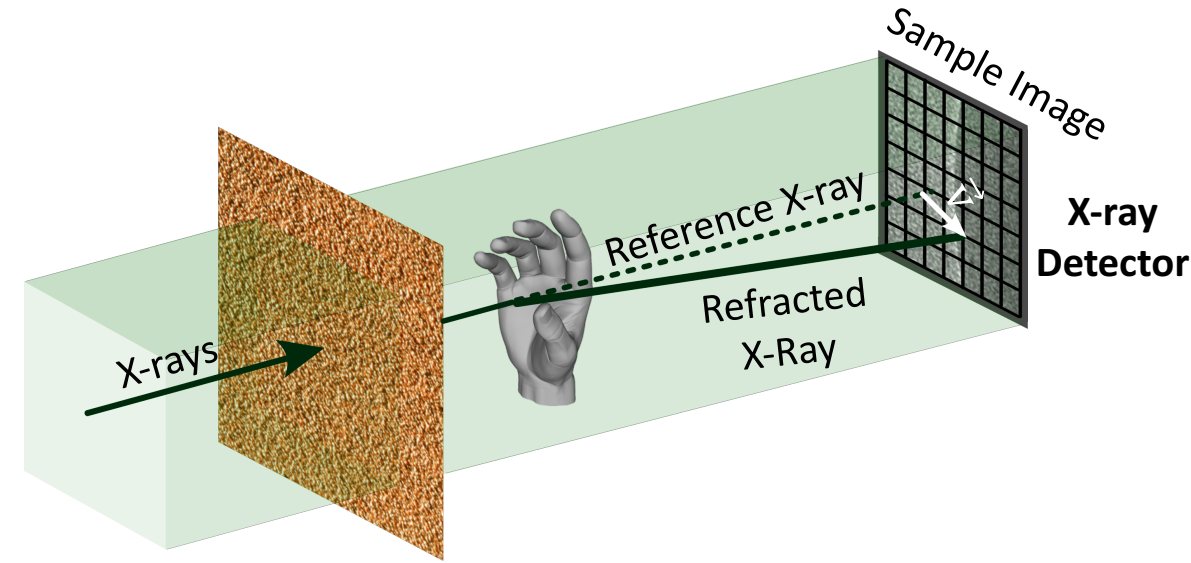
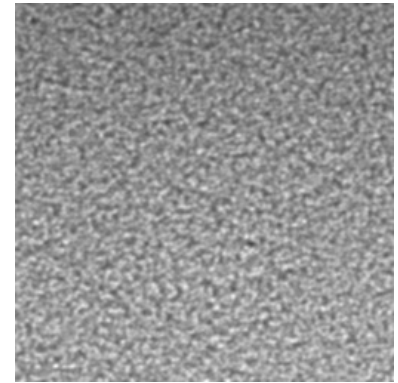
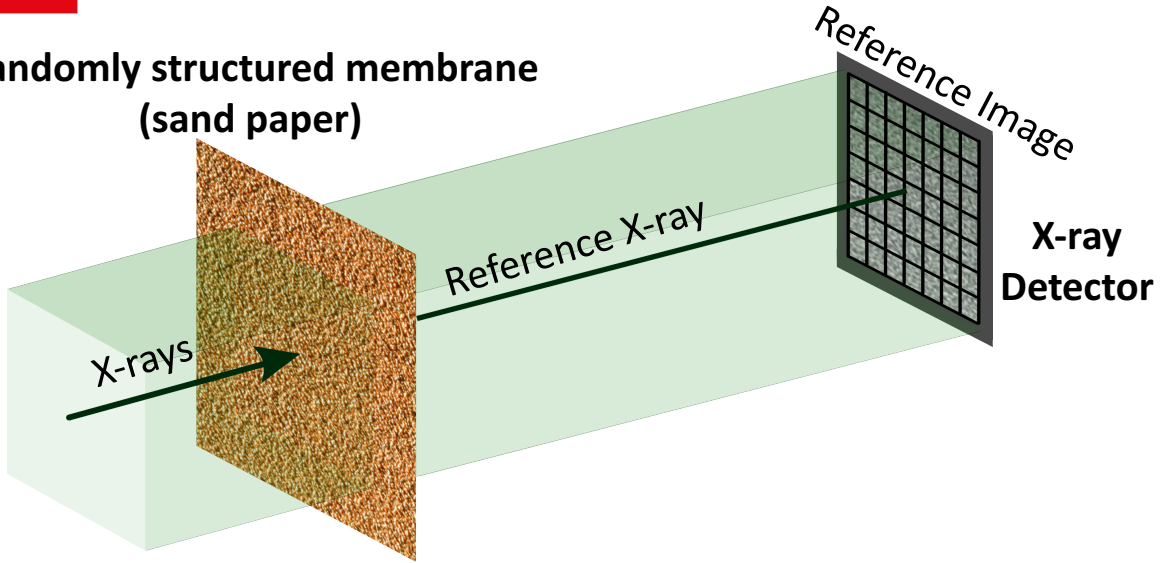


Hellbach et al. Scientific Reports 2017

# Speckle Based Imaging



Randomly structured membrane  
(sand paper)



**Thank you**