

Science & Technology

Facilities council



General information

The Science and Technology Facilities Council (STFC) is UK government funded Research Council that provides research grants to UK academic researchers in the areas of: particle physics; astronomy; and nuclear physics and also provides UK researchers in these areas with access to the large science facilities, e.g. ground based telescopes in Hawaii and Canaries, or access to international scientific collaborations e.g. CERN, FAIR, ESO, ESA, ILL, ESRF etc.

In addition STFC operates other large science facilities at its own laboratories in the UK, for example the ISIS neutron spallation source and Central Laser Facility at the Rutherford Appleton Laboratory (RAL). In addition the STFC develops a range of science technology, for example satellite instrumentation and imaging cameras, ground based astronomy cameras, high energy particle accelerator science and technology, and high speed parallel computing and large scale data management.

STFC employs ~1700 staff on 8 sites, the majority based at the RAL, co-located with the DLS. Over 2000 science facility users per year undertake experiments at RAL in all areas of physics, chemistry, materials science, biology, earth sciences, etc.

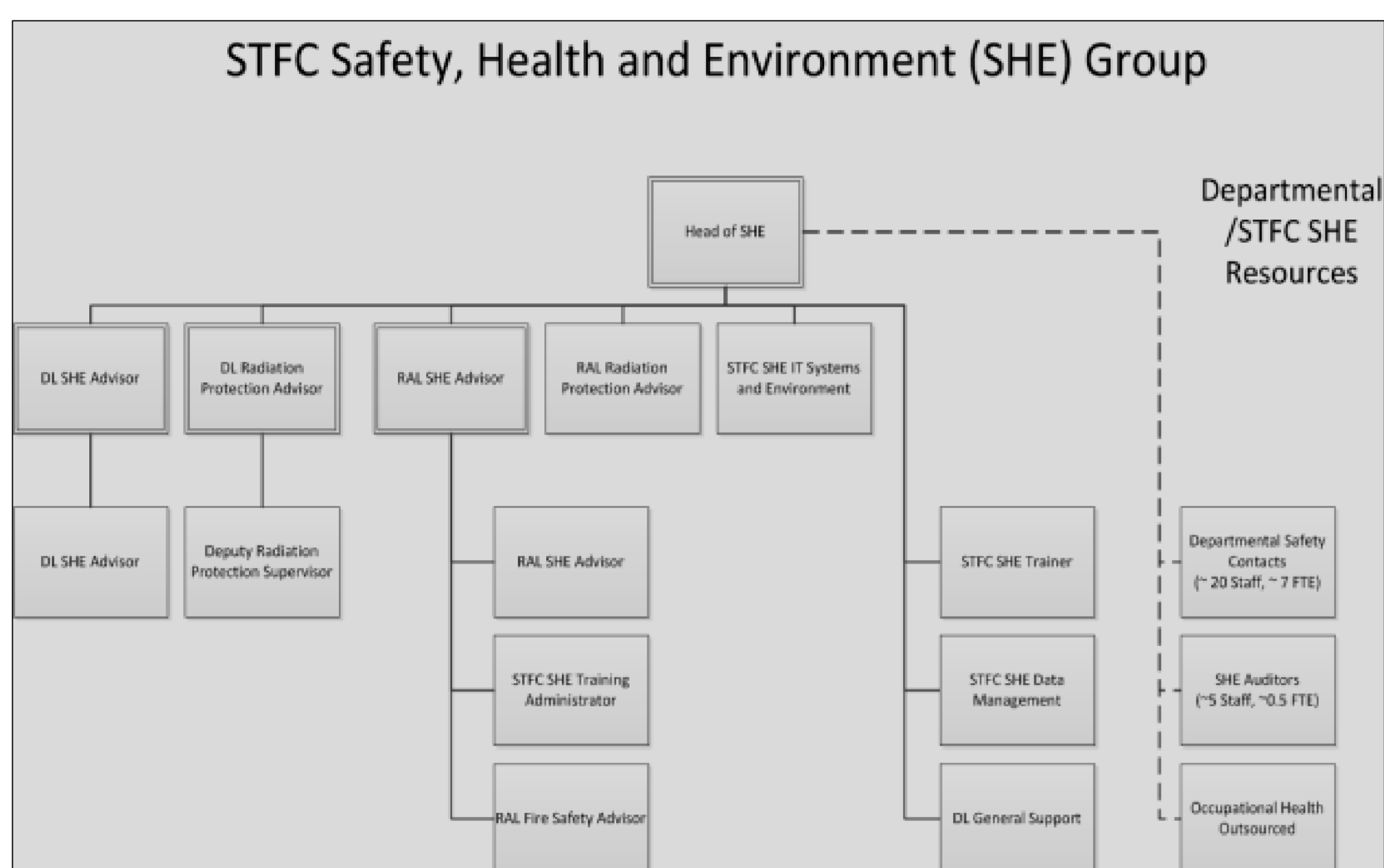
Facts and figures

STFC 2011/12 Expenditure

Staff costs	£ 86 M
Research Grants	£ 133M
International subscriptions	£ 149M
Equipment and services	£ 53M
Depreciation	£ 48M
Total	£ 545M
(Income)	(£61M)
Net expenditure	£ 484M

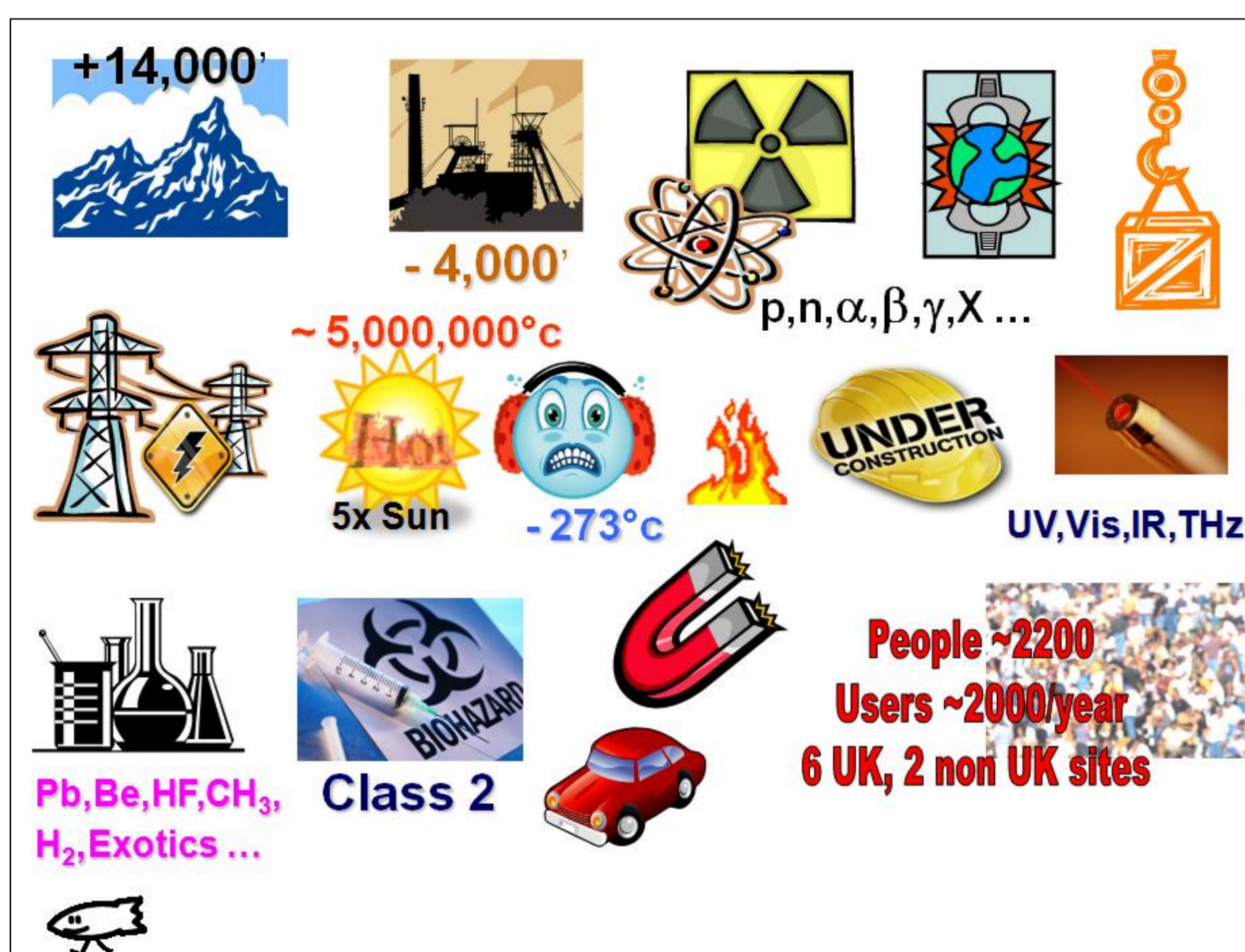
STFC SHE facts

- SHE Group organise ~300 courses/year delivering ~3000 course places plus a growing suite of on-line SHE training courses
- >2000 fire extinguishers at RAL and DL tested annually
- SHE Group produce over 60 reports a year for management committees from Council to Department
- SHE Group receive over 360 SHE Incident Reports a year to assess and follow up
- Over 5000 items of lifting equipment, over 200 Local Exhaust Ventilation Systems and over 400 pressure systems inspected annually at RAL
- SHE Website has ~750 pages and 17,000 uses/year from 8000 visits/year
- SHE Group maintain over 80 Fire Risk Assessments for individual buildings at RAL and DL
- STFC RAL & DL in receipt of Royal Society for Prevention of Accidents (RoSPA) President's Awards



Safety hazards

Due to the scope of its scientific and technical programmes STFC staff face a very wide range of safety hazards from working at high altitudes, to down deep shaft mines, working with all types of ionising and non-ionising radiation, all the hazards of chemical and biological safety laboratories, fire safety, electrical hazards, those arising from construction projects and contractor management through to strong magnetic and electromagnetic fields.



HSE

Safety is a line management responsibility within the STFC cascading from the Chief Executive Officer (CEO) through Directors and Managers to staff. The role of the SHE Group is to provide advice and facilitate the implementation of the STFC SHE management system by line management. SHE Group report, through the Director of Corporate Services, to the STFC CEO.

SHE Group is a small team of, 11 FTE, 14 staff based at RAL and DL addressing a wide range of specialist activities - multi-skilling is required to minimise single point failure and balance workload between sites. Seven of the group have Health and Safety Diplomas (Safety Engineers) and both Radiation Protection Advisors (RPAs) have formal RPA/RWA qualifications (Radiation Engineers).

SHE Group are supported in the implementation of the STFC SHE Management system by:

Departmental Safety Contacts, generally one in each Department/Site and part time, trained to NEBOSH Certificate level (Safety technicians), ~7FTE (19 staff) at ROE, RAL, DL, SO, JAC and ING;

SHE Audit team comprising members of SHE Group and 7 representatives of high hazard Departments timetabled to undertake SHE audits with SHE team members;

Contracted RAL and DL on-site Occupational Health teams ~3FTE (5 staff) managed by HR; and

RAL Health Physics (HP) team (based in ISIS), ~8FTE, undertaking HP surveying, dosimetry and radioactive waste management.

Projects

There are always a range of new scientific projects underway at one point in time. Some of those that are presently underway include: the development of an Electron Beam Test Facility (EBTF) at DL; the design and commissioning of a suite of new neutron beam lines in the ISIS second target station; the Muon Ionising Cooling Experiment (MICE) at RAL; major overhaul of office infrastructure at the RAL site; establishment of tenanted facilities on STFC sites through Innovation and Technology Access Centres (ITACs); and divestment of STFC ownership of the JAC telescopes.