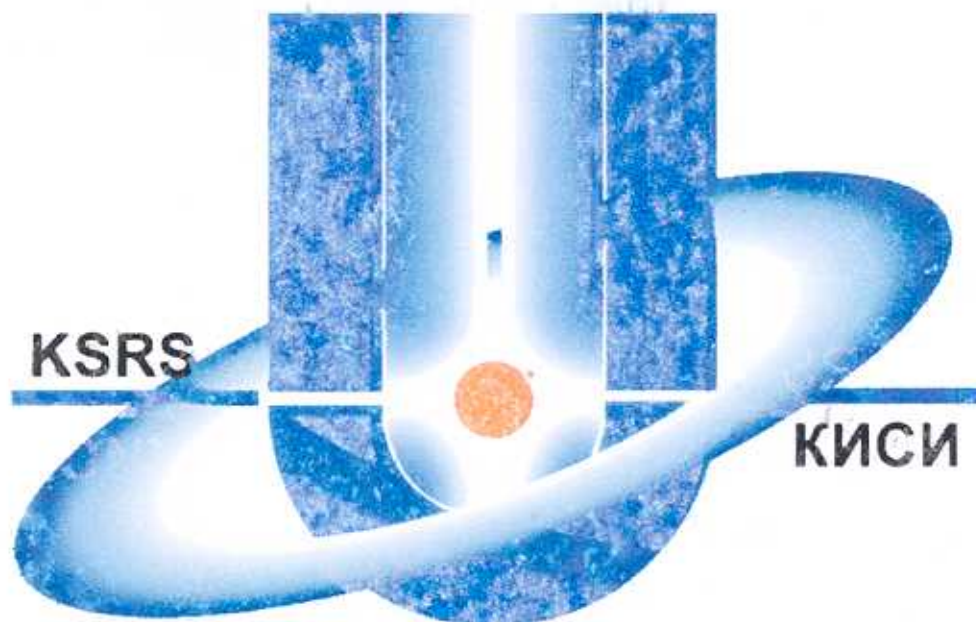


RRC Kurchatov Institute



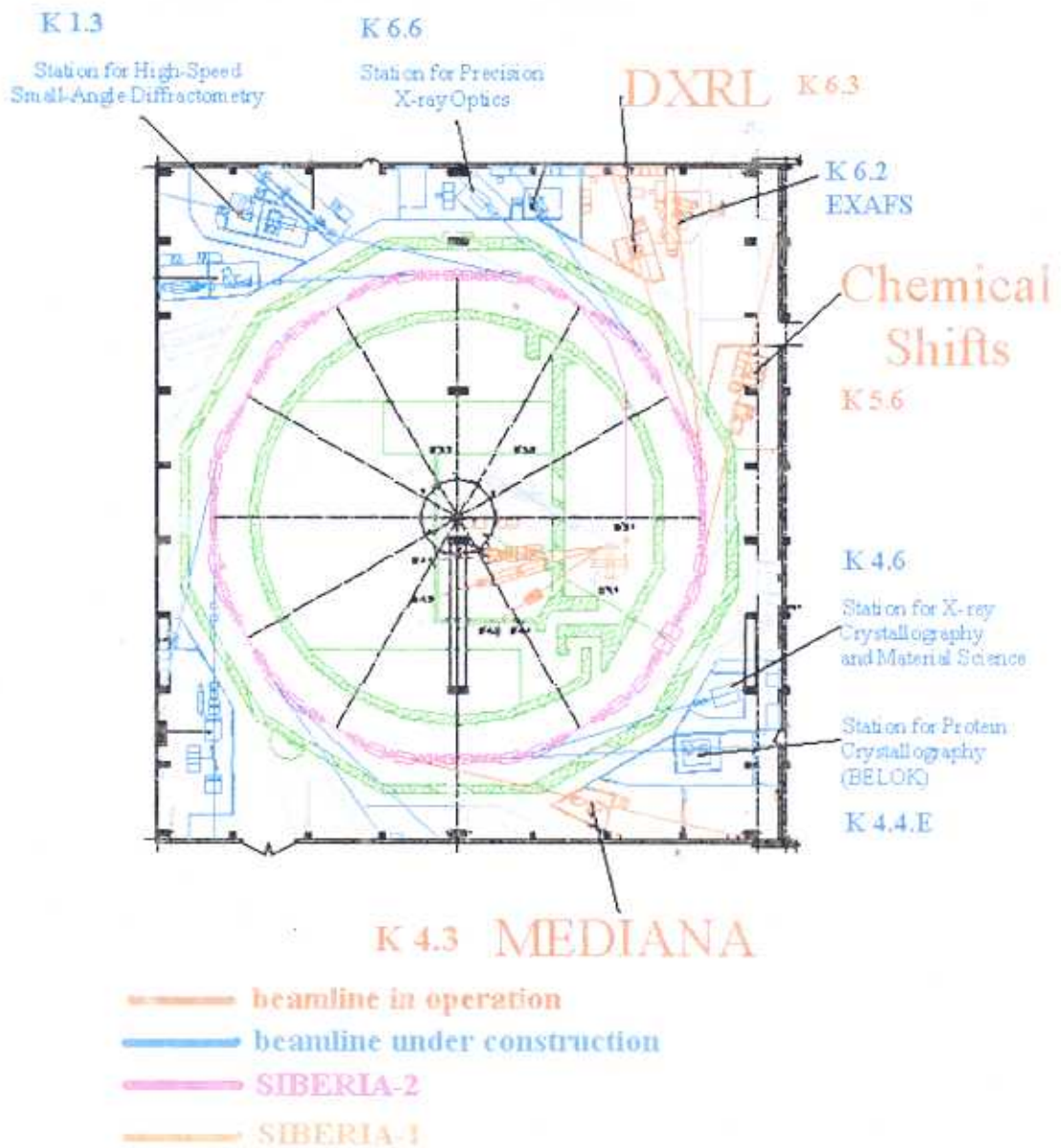
Kurchatov Synchrotron Radiation Source

Status report

Vladimir Ushkov

**11-th ESLS Workshop
Grenoble, 17 – 18 Nov. 2003**

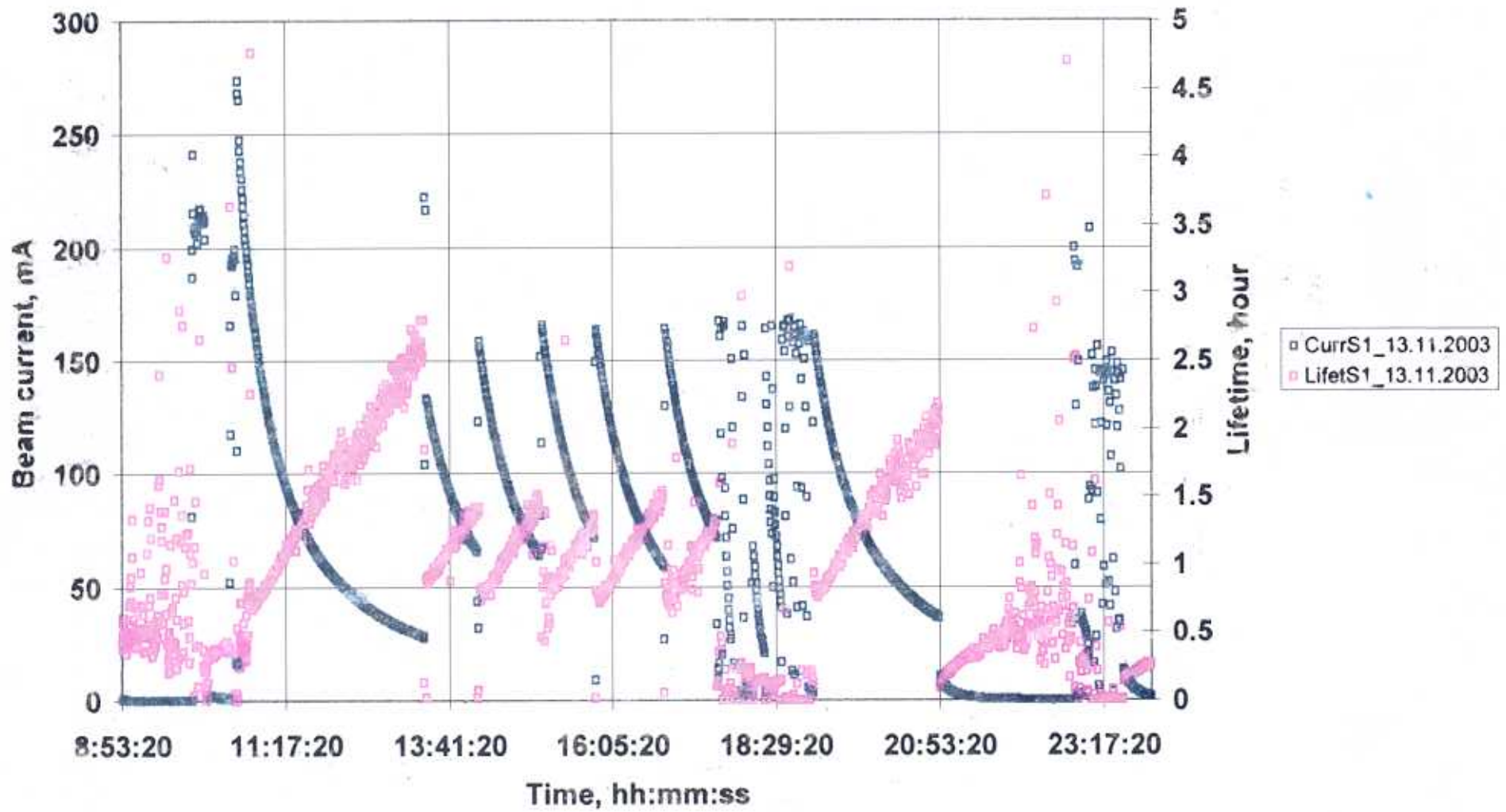
KSRS experimental hall.



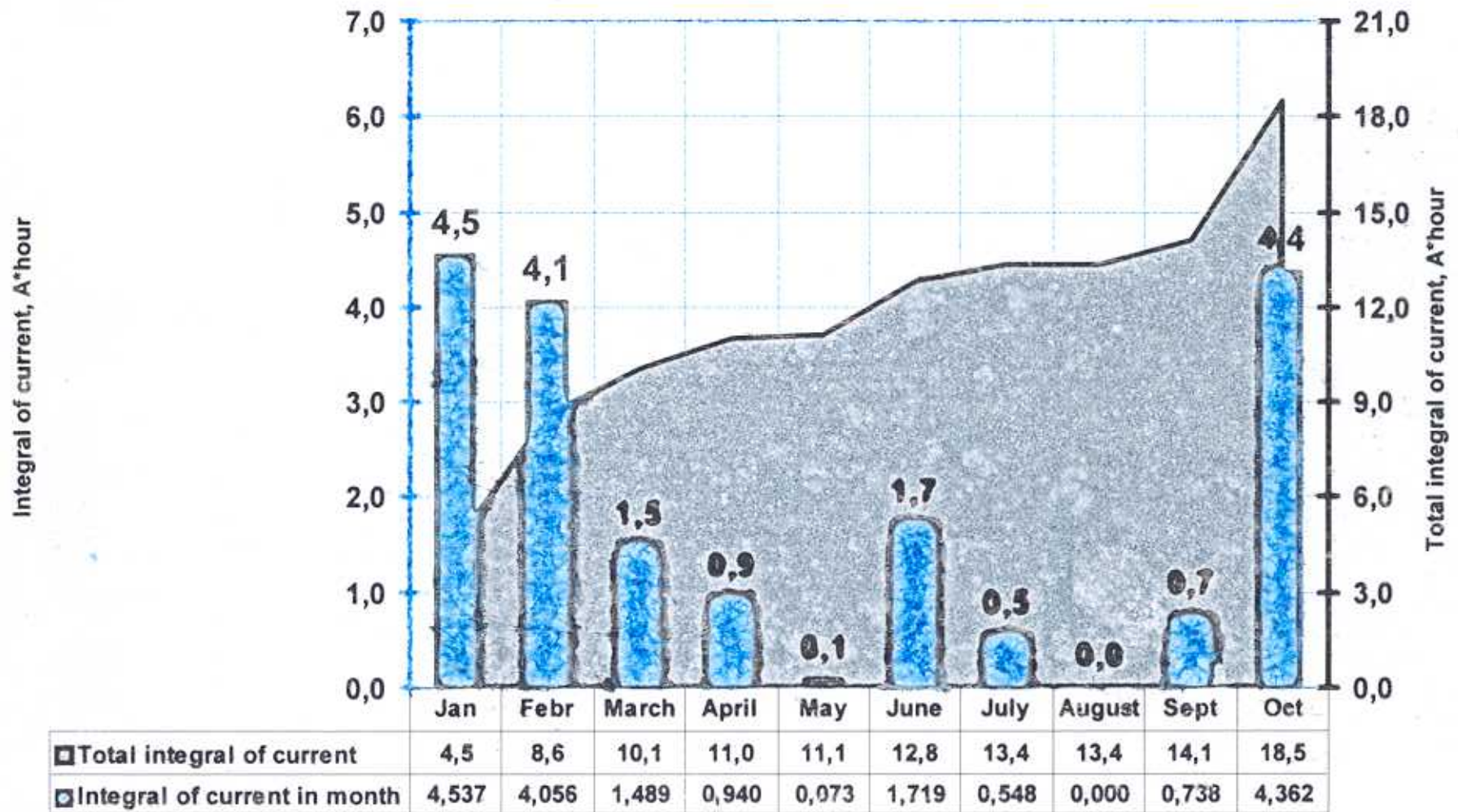
KSRS SR beamlines

Channel	Experimental station	Status	Institution
	<u>SIBERIA-2</u>		
K1.3	High speed small angle diffractometry	Oper.	Biological Institute, Puschino
K4.3	Medical station (MEDIANA)	Oper.	Kurchatov Institute
K4.4.e	Protein crystallography (BELOK)	Oper.	Institute of Crystallography
K4.6	X-ray crystallography and material science	Oper.	Institute of Crystallography
K5.6	Chemical shifts	Oper.	Kurchatov Institute
K6.2	EXAFS spectrometer	Oper.	JINR, Dubna
K6.3	Microtechnology	Oper.	Kurchatov Institute
K6.6	Precision X-ray optic	Oper.	Institute of Crystallography
	<u>SIBERIA-1</u>		
D4.1	Photoelectron spectroscopy	Oper.	Kurchatov Institute
D4.2	VUV spectrometer	Oper.	Kurchatov Institute
D4.3	VUV luminescence spectrometer	Oper.	Moscow State University

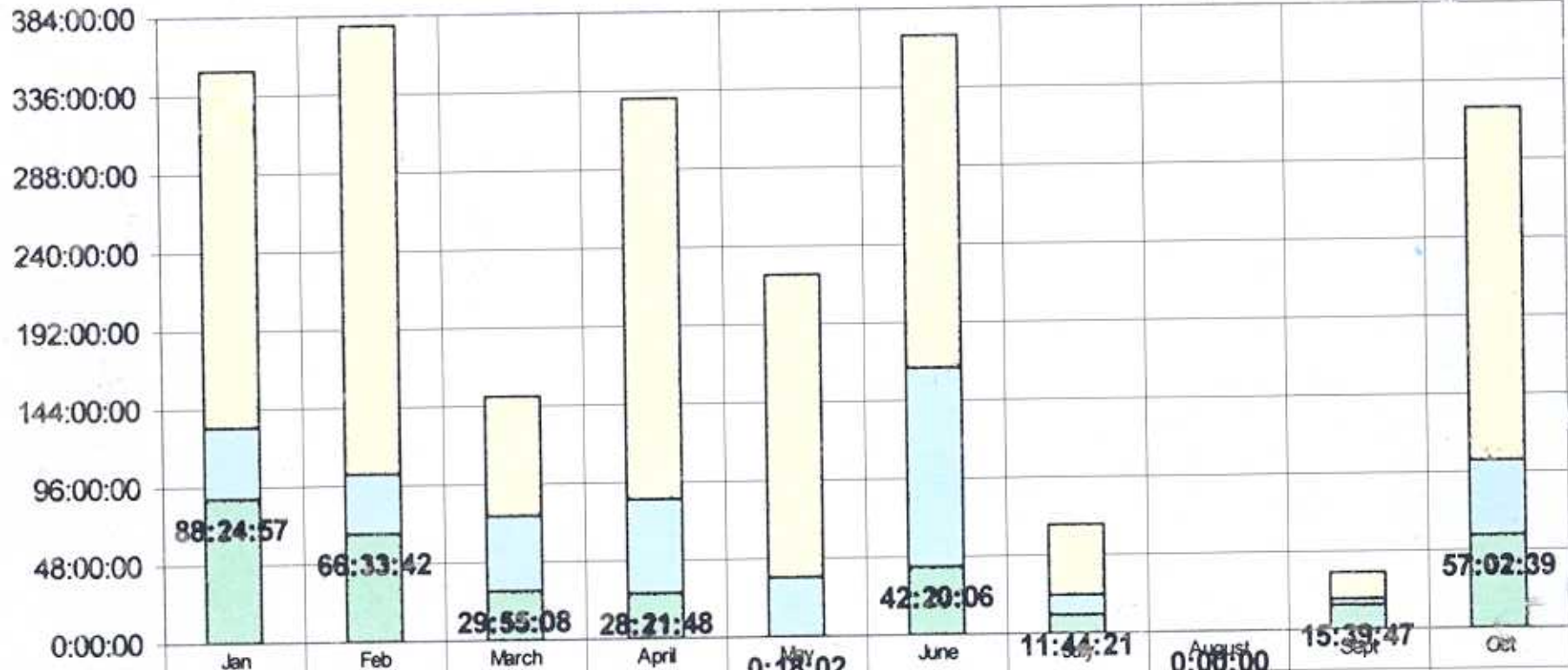
RUN OF SIBERIA-1 13.11.2003



SIBERIA-1: Integral of current at energy 450 MeV during 2003

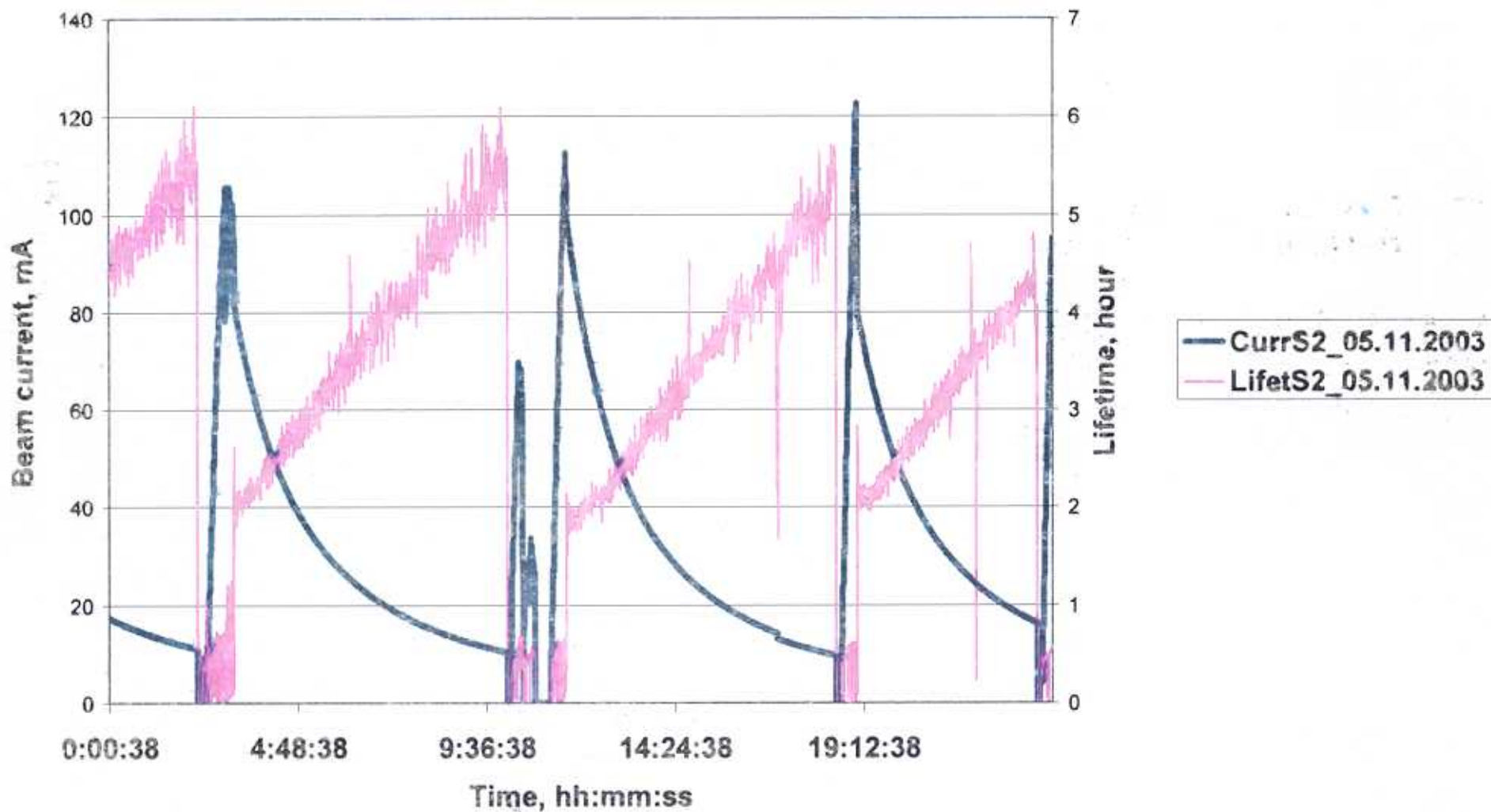


SIBERIA-1: Work in 2003

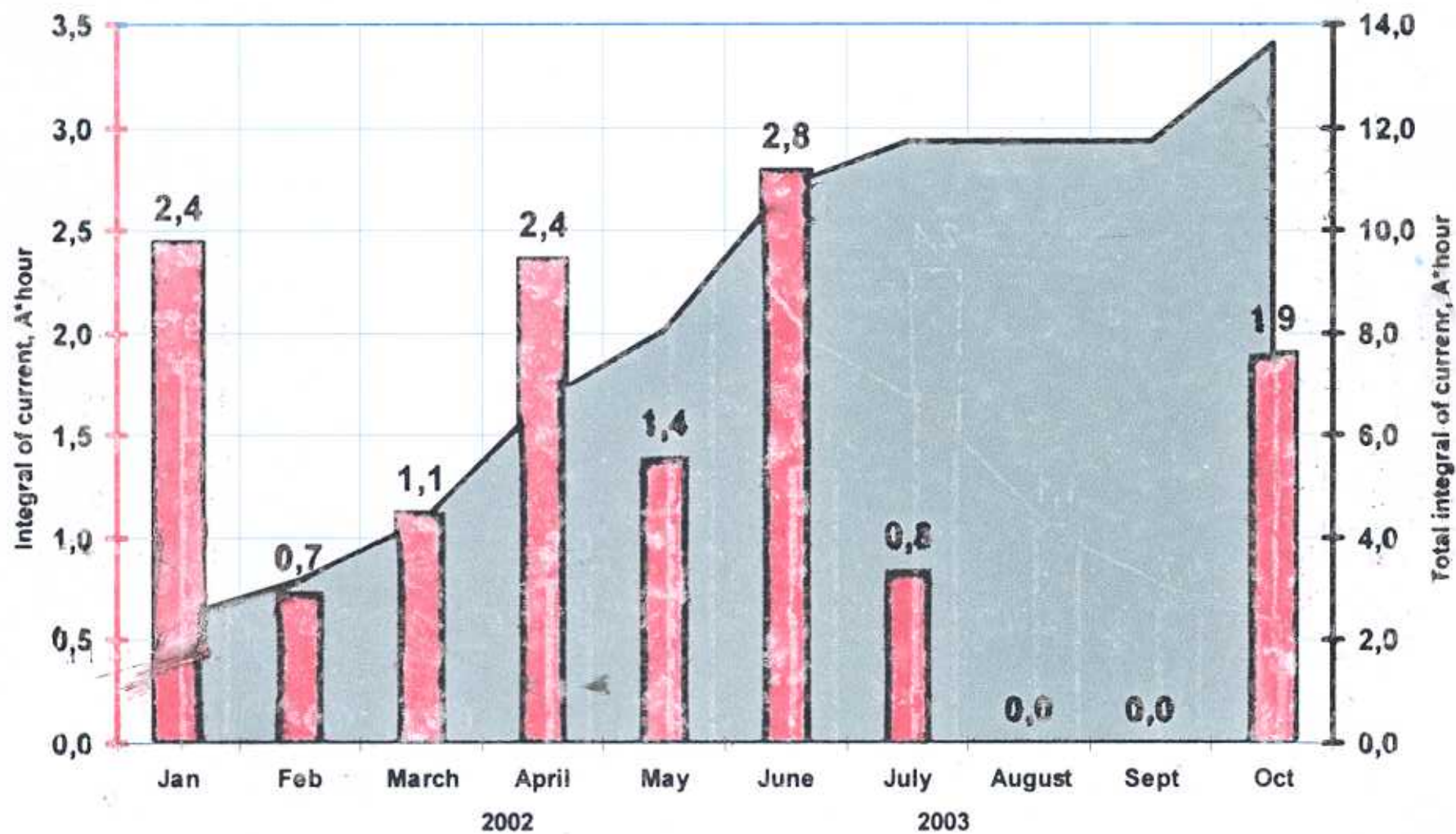


Accelerator physics and technology	218:49:19	275:03:01	73:27:19	245:46:33	186:13:26	204:34:11	42:40:12	0:00:00	16:57:45	216:21:28
Injection	44:21:29	36:36:10	46:29:26	57:05:20	35:48:41	121:13:14	12:13:24	0	2:57:40	46:00:35
Experiment	88:24:57	66:33:42	29:55:08	28:21:48	0:18:02	42:20:06	11:44:21	0	15:39:47	57:02:39

RUN OF SIBERIA-2 05.11.2003



SIBERIA-2: Integral of current at energy 2.5GeV in 2002-2003



■ Total integral of current

■ Integral of current in month

Work of SIBERIA-2 in 2002-2003

